



NAVSTA Norfolk 2026

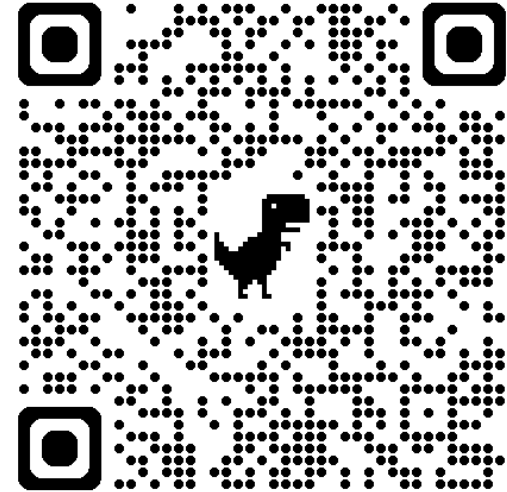
Hurricane Preparedness Brief

March 24, 2026



NAVSTA Norfolk 2026 Hurricane Preparedness Brief

- This Powerpoint and all information briefed in this presentation will be posted on the Installation's Emergency Management Weblink.
- You can use QR code at right for access to site.



<https://cnrma.cnicy.navy.mil/Installations/NAVSTA-Norfolk/Operations-and-Management/Emergency-Management/>



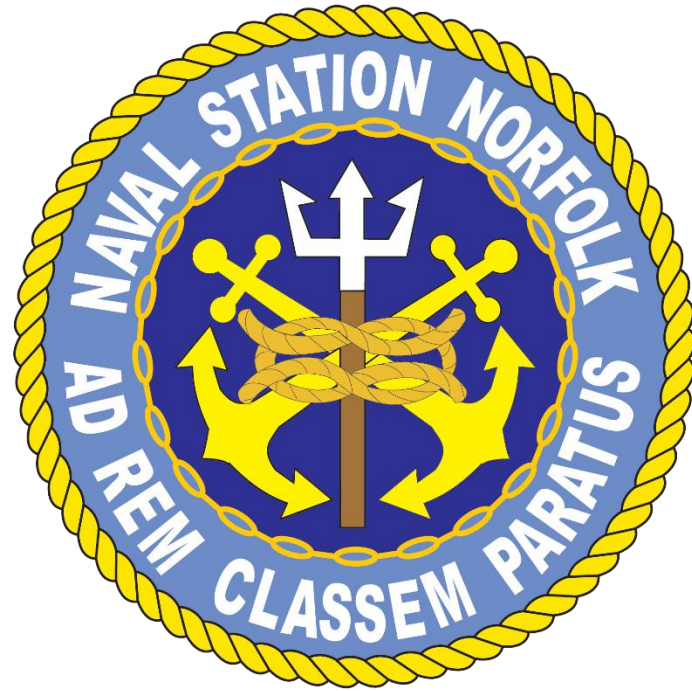
NAVSTA Norfolk 2026 Hurricane Preparedness Brief

- Opening Remarks – CAPT Ray Glenn
- Installation Training Office Info – Exercise HURREX/Citadel Gale – Nathan Lynch
- Emergency Management Information – Micheal Mink
- Destructive Weather Telephone Tree (DWTT) – Micheal Mink
- Fleet Weather Center Norfolk – LT Myles Threatt
- Sortie of Afloat Units – Al Weidetz
- Aircraft Evacuation – LCDR Andrew Gregory
- Navy-Marine Corps Relief Society – Rick O’Rawe
- Warnings and Watches/Info from the City Of Norfolk – Micheal Mink
- Closing Remarks – CAPT Ray Glenn



NAVSTA Norfolk 2026 Hurricane Preparedness Brief

CAPT Ray Glenn
NAVSTA Norfolk Commanding Officer



Opening Remarks



NAVSTA Norfolk 2026 Hurricane Preparedness Brief

NAVSTA Norfolk Installation Training Office



For additional information contact;

Nathan Lynch

nathan.j.lynch2.civ@us.navy.mil

757-322-2325 office

757-438-4174 cell



Exercise HURREX/Citadel Gale Overview

- **Purpose:** HURREX is conducted annually to provide afloat and shore-based commands the opportunity to exercise hurricane preparedness and installation restoration plans prior to the onset of hurricane season.
(Hurricane Season: 1 June to 30 November)
- It is how USFFC and CNIC afloat, shore commands and units in the Eastern CONUS and Gulf of America Area of Responsibility (AOR) carry out and evaluate the following:
 - SORTIE conditions
 - Aircraft evacuation
 - Personnel accountability and evacuation
 - Mission Essential Personnel
 - Disaster preparedness
 - Emergency Management Programs
 - Response and recovery procedures



Exercise HURREX/Citadel Gale Overview

CITADEL GALE

Purpose: The CG portion of the exercise will focus on Fleet and Family Readiness, Public Affairs, Fire and Emergency Services, Emergency Management and Safety.
Letter of Instruction – **171500Z MAR 26** COMUSFLTFORCOM NORFOLK VA

Timeline:

1. Warm Start – **10 April 2026**
2. Hurricane Exercise (HURREX) US Fleet Forces Command: **13-17 April 2026**
OFFICER CONDUCTING EXERCISE (OCE) USFF
3. Operational Pause for the Weekend: **18-19 April 2026**
4. Citadel Gale, Commander Navy Installation Command: **20-24 April 2026**
OCE for CITADEL GALE is CNIC



Emergency Management Information

Micheal Mink

NAVSTA Norfolk Emergency Management Officer



Organizational e-mail at navsta_norfolk_eoc@us.navy.mil

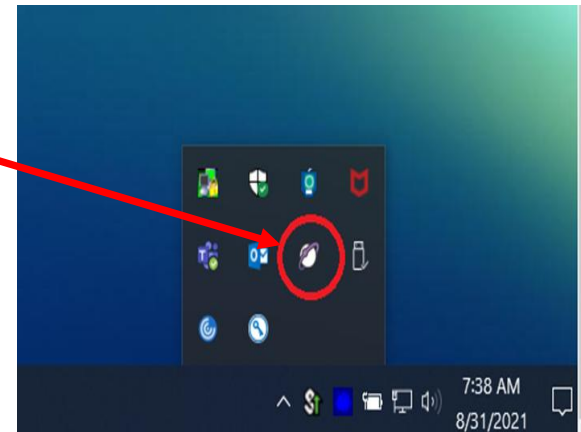
For additional information contact;
Micheal Mink, Emergency Management Officer
757-322-2320/micheal.t.mink1.civ@us.navy.mil



Emergency Management Requirements

Wide Area Alert Network (WAAN) Registration

- 100% registration required for all on NMCI network
- Right click AtHoc icon,
- Left click “Access Self Service”
- Ensure you enter what building you work in
 - Allows us to target alerts to specific buildings
- Register the following “devices”:
 - Primary Work E-mail
 - Work Phone
 - Mobile Phone (if Government cell)
- Other devices optional
 - Ensure you can receive word during hurricane season





Emergency Action Plans/Emergency Management Worksheets

- **Facility Emergency Action Plans (EAPs)**

- An EAP is a written procedure detailing the appropriate response to various types of emergencies. (i.e. weather events, acts of terrorism, hazardous spill, power outages)
- It is an essential component of an organization's safety procedures
- Creating an EAP and training employees on how to follow it can greatly reduce employee injuries, property damage, and can ensure the safety of visitors in the event of an emergency
- Muster points and accountability procedures after an event
- UPDATE: Emergency Manager Worksheets

- **Requirements**

- It is an OSHA requirement for buildings to have an EAP, 29CFR1910.38(a)
- Needs to be update every **3 years**
- Copy of each building's EAP must be on file in the EOC
- Templates are available (See EM Weblink)



Emergency Management Worksheets

- All tenant commands are to have a designated Emergency Manager (EM) POC.
- All tenant commands are to provide numbers of their CAT 1 (Mission Essential Personnel)
 - List can be pulled from Total Workforce Management Services (TWMS)
- **Emergency Management Worksheet has been updated to reflect personnel working in your spaces during night and weekend hours. (Accountability Purposes)**
- Emergency Management Worksheets need to be updated annually, or sooner if there is a turnover.

For additional information contact;
Micheal Mink, Emergency Management Officer
757-322-2320/micheal.t.mink1.civ@us.navy.mil



Destructive Weather Telephone Tree (DWTT)

- The DWTT is a structured communication system designed to rapidly disseminate critical weather-related information to personnel.
- It ensures timely notification and accountability during impactful weather events. (*Ships have different reporting procedures*)
- The system follows a tiered approach, where information is relayed from Subordinate commands to leadership, leadership then reports attainment/accountability to EOC.
- Key events triggering the DWTT include hurricanes, severe storms, flooding, and other extreme weather conditions.



Destructive Weather Telephone Tree (DWTT)

•Submitting Updates:

•To ensure our records remain current, please submit any updates for the Disaster Preparedness POC via email to navsta_norfolk_eoc@us.navy.mil.

•Your submission must include the following information:

- Command/Unit Name
- POC Name & Rank
- Phone Number
- Email Address

• Example Format:

Naval Station Norfolk – LT Johnson / 757-XXX-XXXX /
JOHN.J.JOHNSON.MIL@US.NAVY.MIL



Naval Station Norfolk Communication Outlets



Facebook

- Emergency Management Information
- Upcoming events
- Weather updates and closures
- Found at; <https://www.facebook.com/NavalStationNorfolk>



Instagram – navsta_norfolk



X - @NAV_STA_NORFOLK

Base Information Line – 757-322-2330



Fleet Weather Center Norfolk

Tropical Cyclone/HURREX 2026 Primer

Provided to NAVSTA Norfolk 24MAR

CAPT Angela Francis
Commanding Officer

CDR Alaina Ramsaur
Operations Officer

Mr. Andy Kraft
OTSR SME

Mr. Dave Roberts
Tropical Meteorology SME/
Hurricane Specialist

LT Myles Threatt
Tropical Operations Officer





Tropical Cyclone Quick Reference Guide 2026



Fleet Weather Center - Norfolk, 9141 Third Ave, Norfolk VA 23511-2394

Operations Watchfloor: (757) 444-8786

NIPR email: fwc-nrfk-cdo@us.navy.mil SIPR email: fwc-norfolk.cdo@navy.smil.mil

(Public) <http://www.metoc.navy.mil/fwcn/fwcn.html>

(PKI) <https://weather.navy.mil/NepocSupport/> (SIPR) <https://weather.navy.smil.mil/NepocSupport>

Atlantic Tropical Cyclone Season: 01 June - 30 November

East Pacific Tropical Cyclone Season: 15 May - 30 November

2026 Atlantic Tropical Cyclone Names

- Arthur
- Bertha
- Cristobal
- Dolly
- Edouard
- Fay
- Gonzalo
- Hanna
- Isaias
- Josephine
- Kyle
- Leah
- Marco
- Nana
- Omar
- Paulette
- Rene
- Sally
- Teddy
- Vicky
- Wilfred

*Supplemental names can be found at <https://www.metoc.navy.mil/fwcn/fwcn.html>

Saffir-Simpson Scale Hurricane Destruction Potential

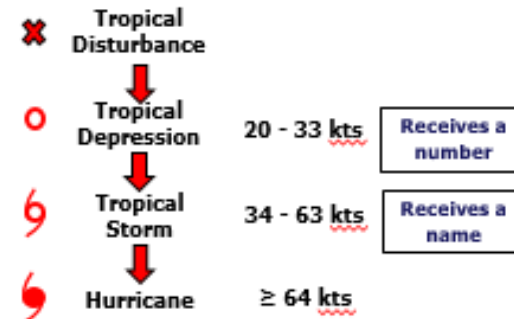
Category	Sustained Wind		Damage
	(knots)	(mph)	
1	64-82	74-95	Minimal
2	83-95	96-110	Moderate
3	96-112	111-129	Extensive
4	113-136	130-156	Extreme
5	≥ 137	≥ 157	Catastrophic

NOTE: Categories 3 - 5 are considered MAJOR hurricanes.

2025 East Pacific Tropical Cyclone Names

- Amanda
- Boris
- Cristina
- Douglas
- Elida
- Fausto
- Genevieve
- Hernan
- Iselle
- Julio
- Karina
- Lowell
- Marie
- Norbert
- Odalys
- Polo
- Rachel
- Simon
- Trudy
- Vance
- Winnie
- Xavier
- Yolanda
- Zeke

Stages of Development

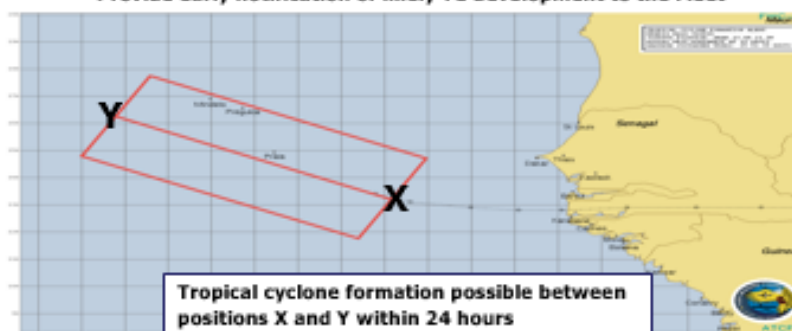


Tropical Cyclones: Development Areas and Movement



Tropical Cyclone Formation Alert (TCFA)

Provide early notification of likely TC development to the Fleet





Tropical Cyclone Quick Reference Guide 2026

Fleet Weather Center - Norfolk, 9141 Third Ave, Norfolk VA 23511-2394

Operations Watchfloor: (757) 444-8786

NIPR email: fwc-nrfk-cdo@us.navy.mil

SIPR email: fwc-norfolk.cdo@navy.smil.mil

(Public) <http://www.metoc.navy.mil/fwcn/fwcn.html>

(PKI) <https://weather.navy.mil/NepocSupport/> (SIPR) <https://weather.navy.smil.mil/NepocSupport>



Conditions of Readiness (CORs)

(time until the forecast onset of destructive winds*)

COR V	96 hours
COR IV	72 hours
COR III	48 hours
COR II	24 hours
COR I	12 hours

* Destructive winds are defined as sustained winds \geq 50 KTS

Fleet Sortie Conditions

- Charlie** - Prepare to sortie within **48 hours**
- Bravo** - Expected sortie within **24 hours**
- Alpha** - Commence sortie to sea

Aircraft Evacuation Status Reports

(required at the following times)

- 72 hours**
- 48 hours**
- 24 hours**
- 12 hours**

KEY TO TROPICAL CYCLONE WARNING GRAPHICS

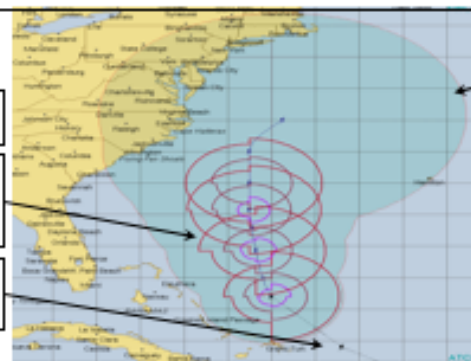
Wind radii* - Largest distance from the center of the tropical cyclone that a particular sustained surface wind speed threshold (e.g., 34, 50, 64 kt) anywhere in a particular quadrant (NE, SE, SW, NW) can be found; this wind speed surrounds the center and is associated with the circulation at a given point in time.

- Leads to an inherent over-estimate of radii, especially near land.

*Wind radii are not valid over land

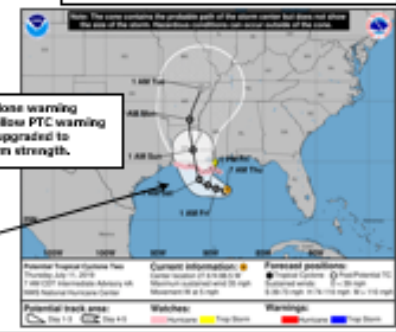
Forecast tropical cyclone positions and wind radii indicated in magenta and burgundy.

Previous six-hourly tropical cyclone positions indicated in black.



The shaded area outlined by a dashed line represents **forecast uncertainty**. This "cone" depicts the average track forecast error for days 1 through 5 based on the National Hurricane Center's five-year average forecast error. For Navy tropical warnings, the entire 5-day path of tropical storm force winds (winds \geq 34 knots) will be within the cone about 67% of the time.

Tropical cyclone warning #805 will follow PTC warning #804 once upgraded to tropical storm strength.



Potential Tropical Cyclone Warning (PTC)

A term used in NHC advisory products to describe a disturbance not yet a **tropical cyclone**, but which poses the threat of bringing **tropical storm or hurricane** conditions to land areas within **72 hours**.



Tropical Cyclone Quick Reference Guide 2026

Fleet Weather Center - Norfolk, 9141 Third Ave, Norfolk VA 23511-2394

Operations Watchfloor: (757) 444-8786

NIPR email: fwc-nrfk-cdo@us.navy.mil SIPR email: fwc-norfolk.cdo@navy.smil.mil

(Public) <http://www.metoc.navy.mil/fwcn/fwcn.html>

(PKI) <https://weather.navy.mil/NepocSupport/> (SIPR) <https://weather.navy.smil.mil/NepocSupport>



2026 Season Updates

NHC cone of uncertainty (5-yr forecast track error distribution) with U.S. watches/warnings becomes operational for the 2026 Atlantic Hurricane Season

Key Features:

- Inland U.S. watches/warnings
- Single shading for the entire 5-day Cone of Uncertainty

Improved representation of both coastal and inland surface wind risk





Storm Surge Quick Reference Guide 2026

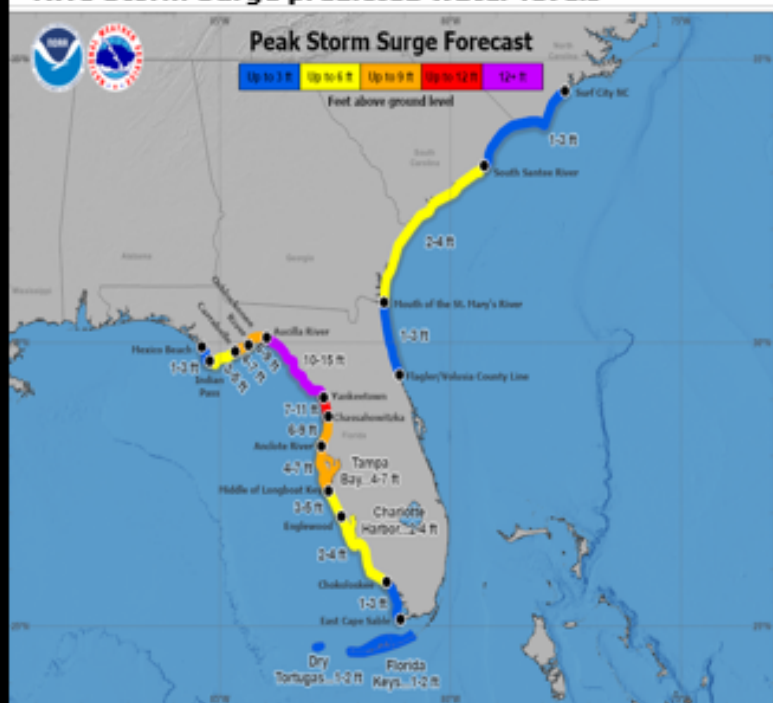
Fleet Weather Center - Norfolk, 9141 Third Ave, Norfolk VA 23511-2394
Operations Watchfloor: (757) 444-8786

NIPR email: fwc-nrfk-cdo@us.navy.mil SIPR email: fwc-norfolk.cdo@navy.smil.mil
(Public) <http://www.metoc.navy.mil/fwcn/fwcn.html>

(PKI) <https://weather.navy.mil/NepocSupport/> (SIPR) <https://weather.navy.smil.mil/NepocSupport>



NHC Storm Surge predicted water levels



Hurricane Idalia
Tuesday August 29, 2023
11 AM EDT Advisory 12
NWS National Hurricane Center

User Notes: Water levels along the immediate coast could reach the following heights above ground level within the indicated areas. Elevated water levels will likely be accompanied by large and destructive waves. Colors are determined by the highest values in the associated forecast peak surge range. Values shown on this graphic are inclusive of tide.

Peak storm surge prediction is available in graphic format on the NHC website (left) and in the Tropical Cyclone Public Advisory (below).

- Peak storm surge inundation occurring at the time of high tide is expected to occur somewhere within the outlined area (left and bottom)
 - Not location-specific
- Introduced when a watch or warning is issued
 - Generally 48 hours prior to onset of conditions

NATIONAL HURRICANE CENTER
NATIONAL OCEANIC AND ATMOSPHERIC ADMINISTRATION

HAZARDS AFFECTING LAND

STORM SURGE: The combination of a dangerous storm surge and the tide will cause normally dry areas near the coast to be flooded by rising waters moving inland from the shoreline. The water could reach the following heights above ground somewhere in the indicated areas if the peak surge occurs at the time of high tide...

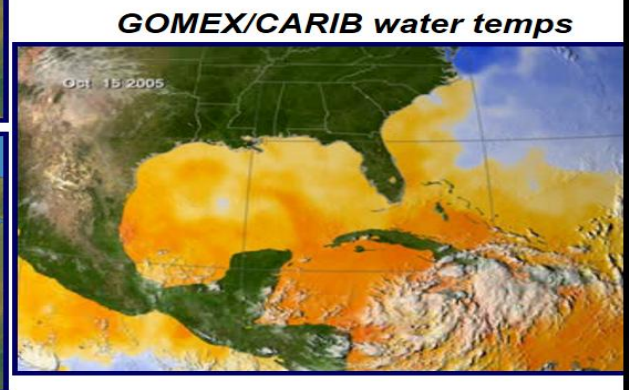
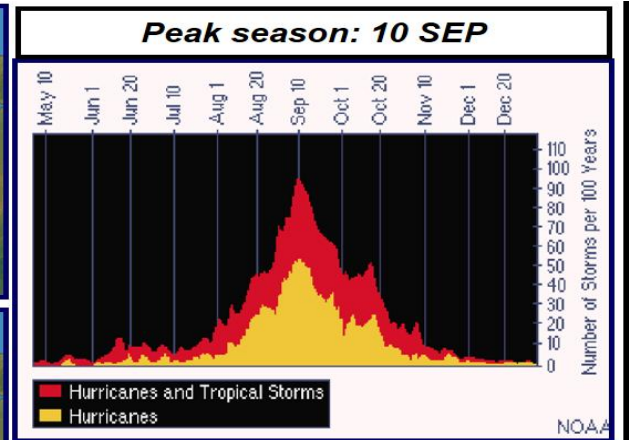
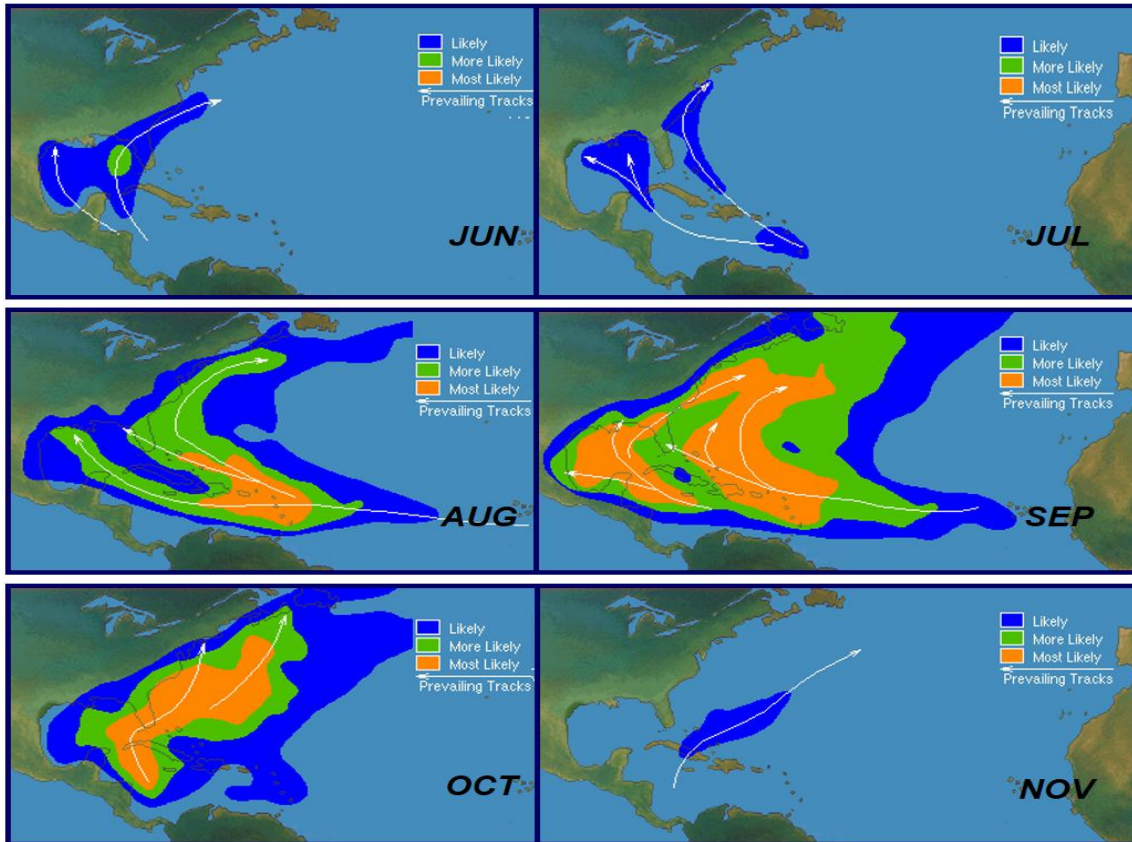
Aucilla River, FL to Yankeetown, FL...10-15 ft
Yankeetown to Chassahowitzka, FL...7-11 ft
Chassahowitzka, FL to Anclote River, FL...6-9 ft
Ochlockonee River, FL to Aucilla River, FL...6-9 ft
Anclote River, FL to Middle of Longboat Key, FL...4-7 ft
Tampa Bay...4-7 ft
Carrabelle, FL to Ochlockonee River, FL...4-7 ft

Storm Surge Warning- A danger of life-threatening inundation from rising water moving inland from the shoreline somewhere within the specified area, **generally within 36 hours.**

Storm Surge Watch- Life-threatening inundation is possible somewhere within the specified area, **generally within 48 hours.**

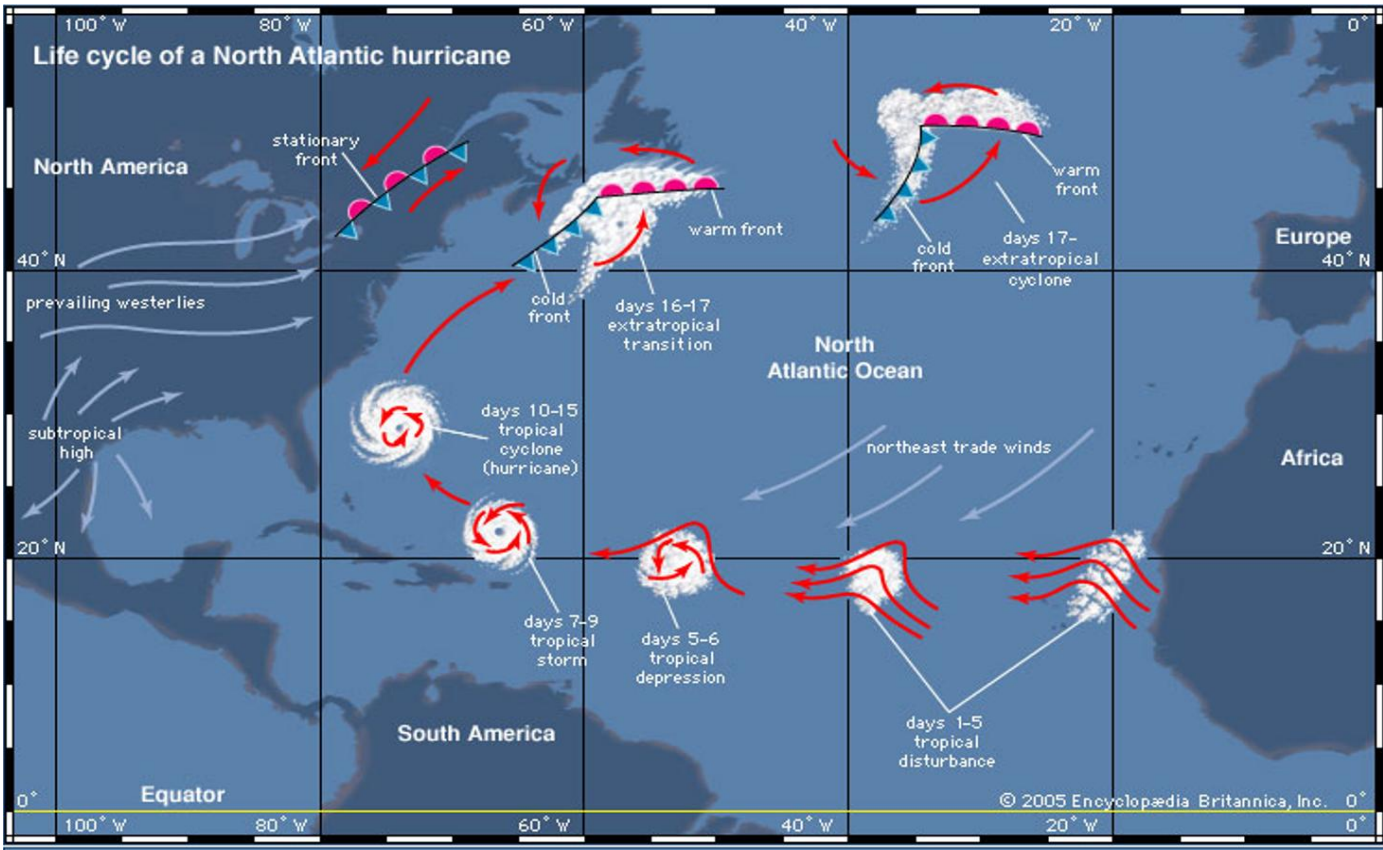


Atlantic Season: 01 JUN – 30 NOV



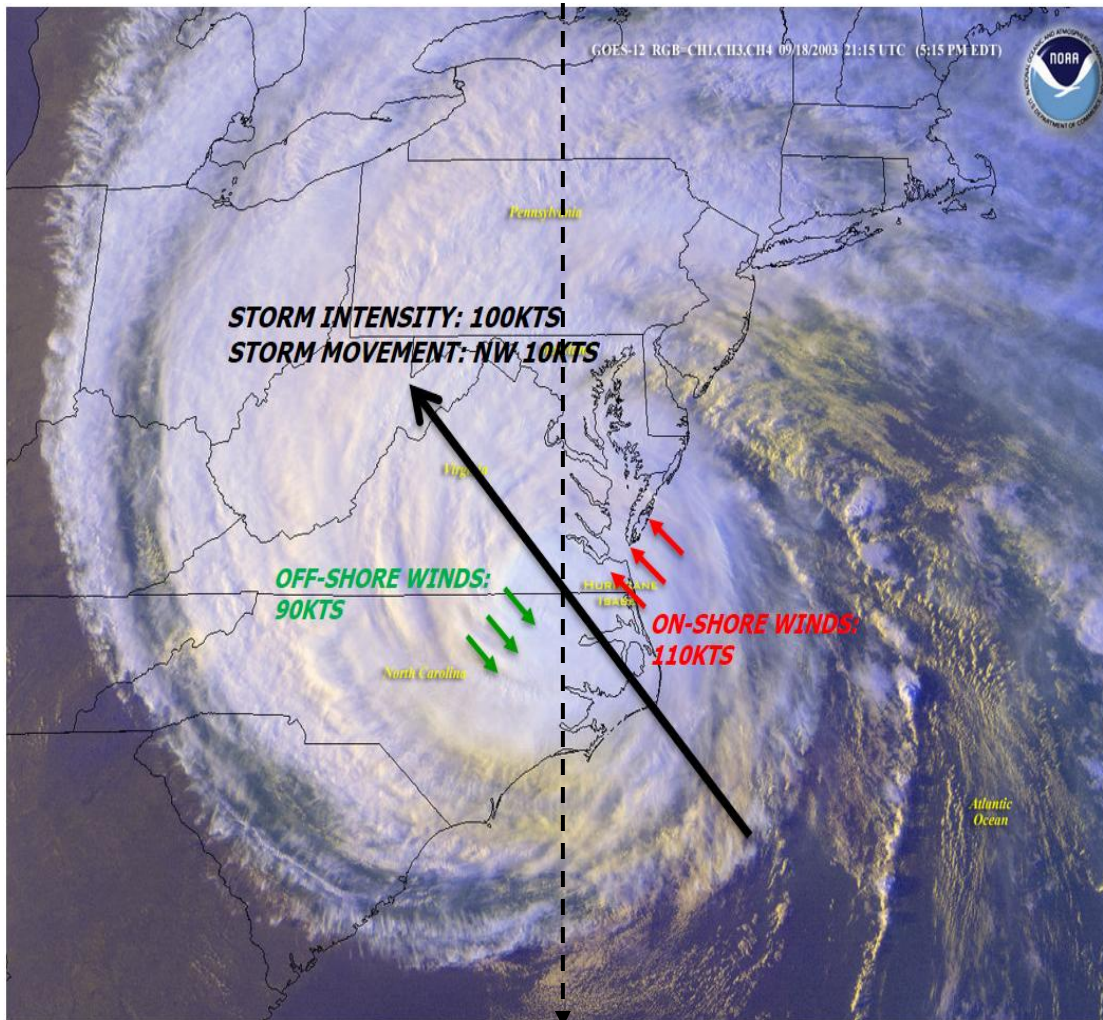


Tropical Cyclone Life Cycle





Dangerous Semi-Circle

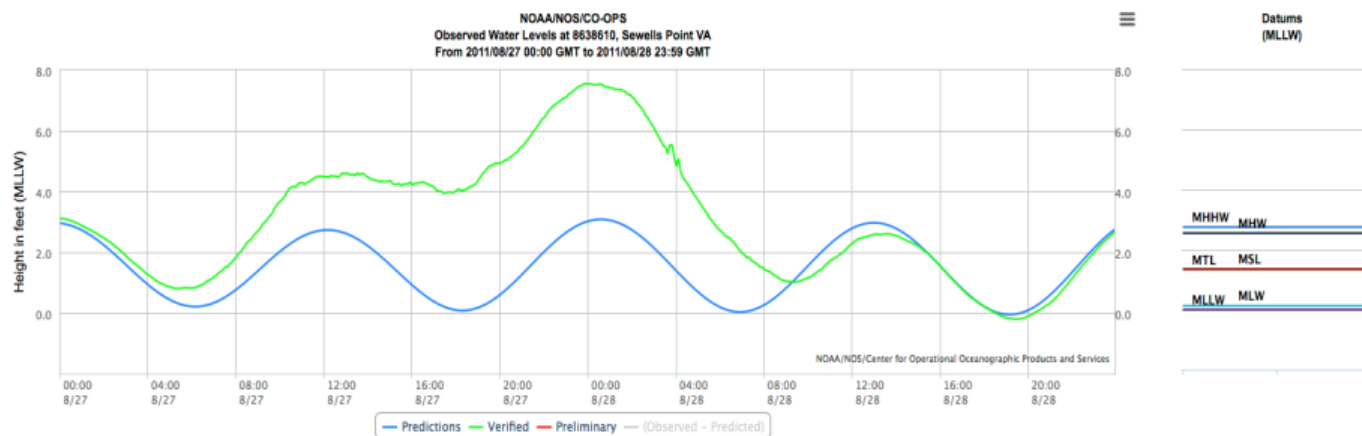
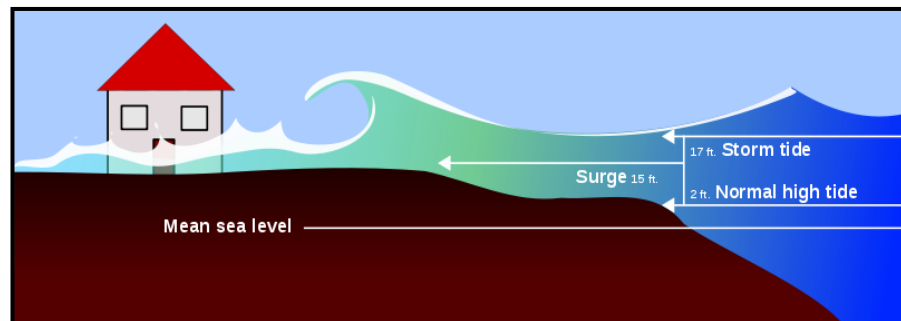


- The right side of a tropical cyclone is known as the dangerous semi-circle
- Increased winds due to rotational momentum combining with translational speed
- Increased storm surge due to on-shore winds



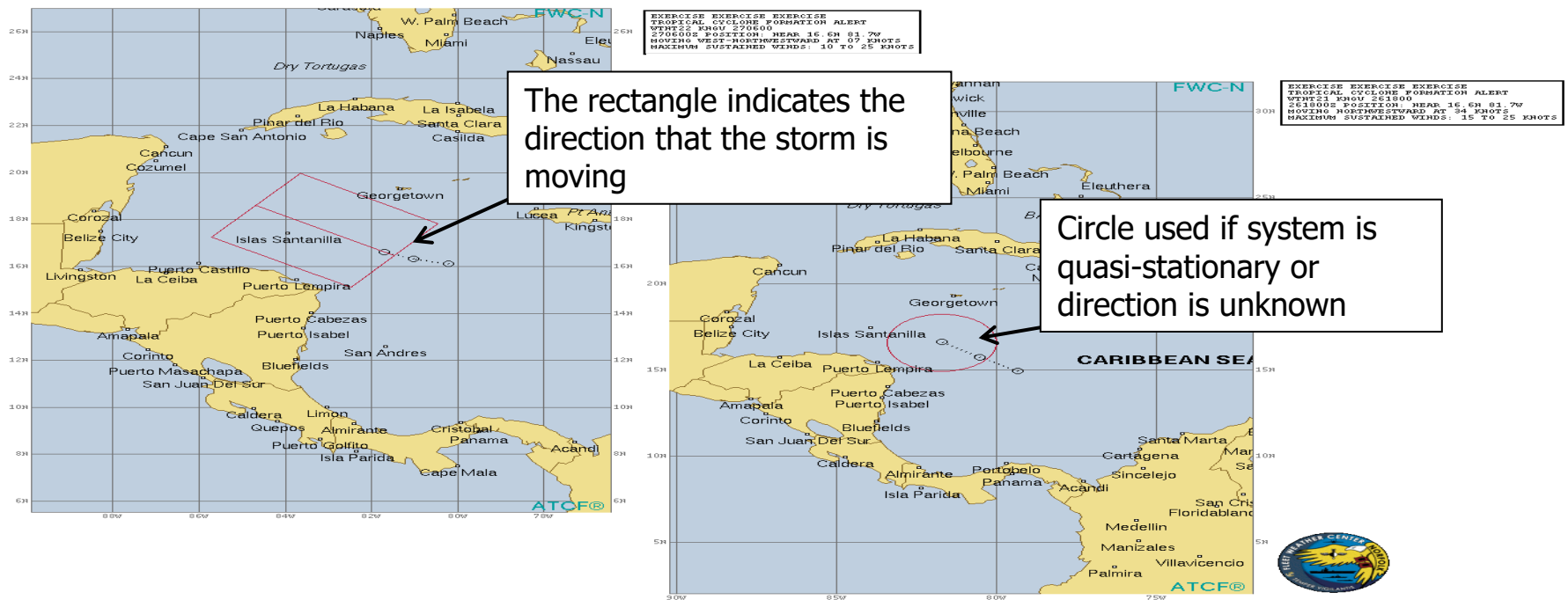
Storm Surge and Storm Tide

- Storm surge is the additional water above normal levels
- Storm tide is the height above mean sea level (includes high tide)





Tropical Cyclone Formation Alert (TCFA)



Example text: Formation of a tropical cyclone is possible 100 nautical miles either side of a line between points A and B within the next 24 hours.



FWC-Norfolk Warning Message

Message traffic storm updates at

- 0500
- 1100
- 1700
- 2300 EDT

<p>WTTT01 KNGU 072100 SUBJ: TROPICAL STORM DEBBY (04L) WARNING NR 022 1. TROPICAL STORM DEBBY (04L) WARNING NR 022 01 ACTIVE TROPICAL CYCLONE IN ATLANTIC MAX SUSTAINED WINDS BASED ON ONE-MINUTE AVERAGE WIND RADII VALID OVER OPEN WATER ONLY --- WARNING POSITION: 071800Z --- NEAR 32.4N 79.1W MOVEMENT PAST SIX HOURS - 030 DEGREES AT 03 KTS POSITION ACCURATE TO WITHIN 025 NM POSITION BASED ON CENTER LOCATED BY SATELLITE PRESENT WIND DISTRIBUTION: MAX SUSTAINED WINDS - 050 KT, GUSTS 060 KT WIND RADII VALID OVER OPEN WATER ONLY RADIUS OF 050 KT WINDS - 000 NM NORTHEAST QUADRANT 120 NM SOUTHEAST QUADRANT 000 NM SOUTHWEST QUADRANT 000 NM NORTHWEST QUADRANT RADIUS OF 034 KT WINDS - 150 NM NORTHEAST QUADRANT 160 NM SOUTHEAST QUADRANT 090 NM SOUTHWEST QUADRANT 000 NM NORTHWEST QUADRANT REPEAT POSIT: 32.4N 79.1W --- FORECASTS: 12 HRS, VALID AT: 080600Z --- 33.1N 79.4W MAX SUSTAINED WINDS - 055 KT, GUSTS 065 KT WIND RADII VALID OVER OPEN WATER ONLY RADIUS OF 050 KT WINDS - 000 NM NORTHEAST QUADRANT 100 NM SOUTHEAST QUADRANT 000 NM SOUTHWEST QUADRANT 000 NM NORTHWEST QUADRANT RADIUS OF 034 KT WINDS - 120 NM NORTHEAST QUADRANT 150 NM SOUTHEAST QUADRANT 030 NM SOUTHWEST QUADRANT 000 NM NORTHWEST QUADRANT VECTOR TO 24 HR POSIT: 345 DEG/ 06 KTS --- 24 HRS, VALID AT: 081800Z --- 34.3N 79.8W MAX SUSTAINED WINDS - 040 KT, GUSTS 050 KT WIND RADII VALID OVER OPEN WATER ONLY RADIUS OF 034 KT WINDS - 120 NM NORTHEAST QUADRANT 120 NM SOUTHEAST QUADRANT 000 NM SOUTHWEST QUADRANT 000 NM NORTHWEST QUADRANT VECTOR TO 36 HR POSIT: 360 DEG/ 10 KTS</p>	<p>DTG, Name, Warning Number</p> <p>Max sustained Winds</p> <p>Wind radii</p>	<p>36 HRS, VALID AT: 090600Z --- 36.2N 79.8W MAX SUSTAINED WINDS - 030 KT, GUSTS 040 KT WIND RADII VALID OVER OPEN WATER ONLY POST-TROPICAL VECTOR TO 48 HR POSIT: 025 DEG/ 20 KTS --- EXTENDED OUTLOOK: 48 HRS, VALID AT: 091800Z --- 39.8N 77.6W MAX SUSTAINED WINDS - 030 KT, GUSTS 040 KT WIND RADII VALID OVER OPEN WATER ONLY POST-TROP/EXTRATROP VECTOR TO 60 HR POSIT: 035 DEG/ 28 KTS --- 60 HRS, VALID AT: 100600Z --- 44.3N 73.1W MAX SUSTAINED WINDS - 030 KT, GUSTS 040 KT WIND RADII VALID OVER OPEN WATER ONLY POST-TROP/EXTRATROP VECTOR TO 72 HR POSIT: 040 DEG/ 30 KTS --- 72 HRS, VALID AT: 101800Z --- 48.8N 67.3W MAX SUSTAINED WINDS - 030 KT, GUSTS 040 KT WIND RADII VALID OVER OPEN WATER ONLY POST-TROP/EXTRATROP VECTOR TO 96 HR POSIT: 055 DEG/ 21 KTS --- LONG RANGE OUTLOOK: --- 96 HRS, VALID AT: 111800Z --- 53.0N 56.0W MAX SUSTAINED WINDS - 030 KT, GUSTS 040 KT WIND RADII VALID OVER OPEN WATER ONLY POST-TROP/EXTRATROP --- REMARKS: 072100Z POSITION NEAR 32.5N 79.1W. 07AUG24. TROPICAL STORM DEBBY (04L), LOCATED APPROXIMATELY 111 NM SOUTH-SOUTHWEST OF MOTSU SUNNY_POINT_IC, HAS TRACKED NORTH-NORTHEAST AT 03 KNOTS OVER THE PAST SIX HOURS. 12FT SEAS: 270NM NE, 240NM SE, 000NM SW, 000NM NW. MAXIMUM SIGNIFICANT WAVE HEIGHT AT 071800Z IS 16 FEET. NEXT WARNINGS AT 080300Z, 080900Z, 081500Z AND 082100Z.</p>
---	--	--

Position with geographic reference

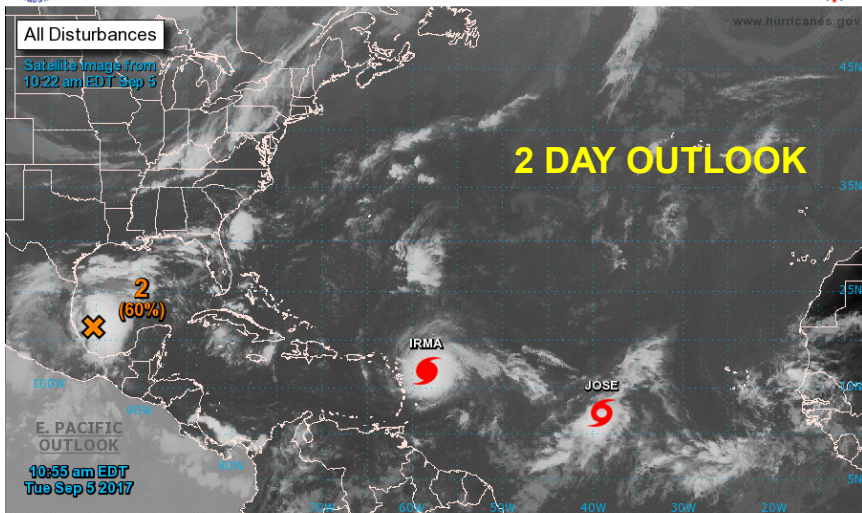
**12ft seas
Max significant wave height**



NHC Graphical Outlook



Two-Day Graphical Tropical Weather Outlook
National Hurricane Center Miami, Florida

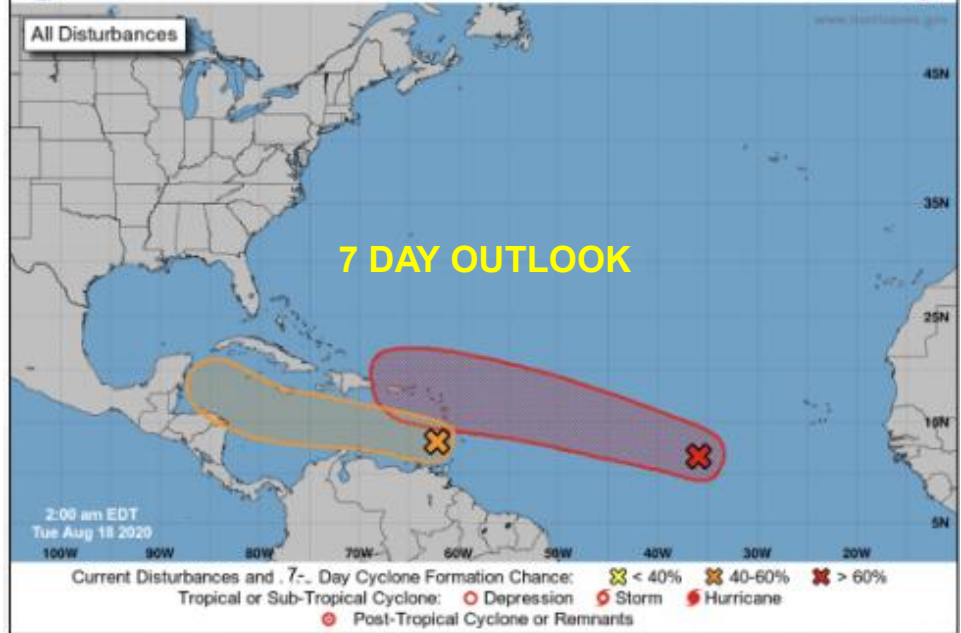


Current Disturbances and Two-Day Cyclone Formation Chance: < 40% 40-60% > 60%
 Tropical or Sub-Tropical Cyclone: Depression Storm Hurricane
 Post-Tropical Cyclone Remnants

<http://www.nhc.noaa.gov>



Seven-Day Graphical Tropical Weather Outlook



Current Disturbances and 7-Day Cyclone Formation Chance: < 40% 40-60% > 60%
 Tropical or Sub-Tropical Cyclone: Depression Storm Hurricane
 Post-Tropical Cyclone or Remnants

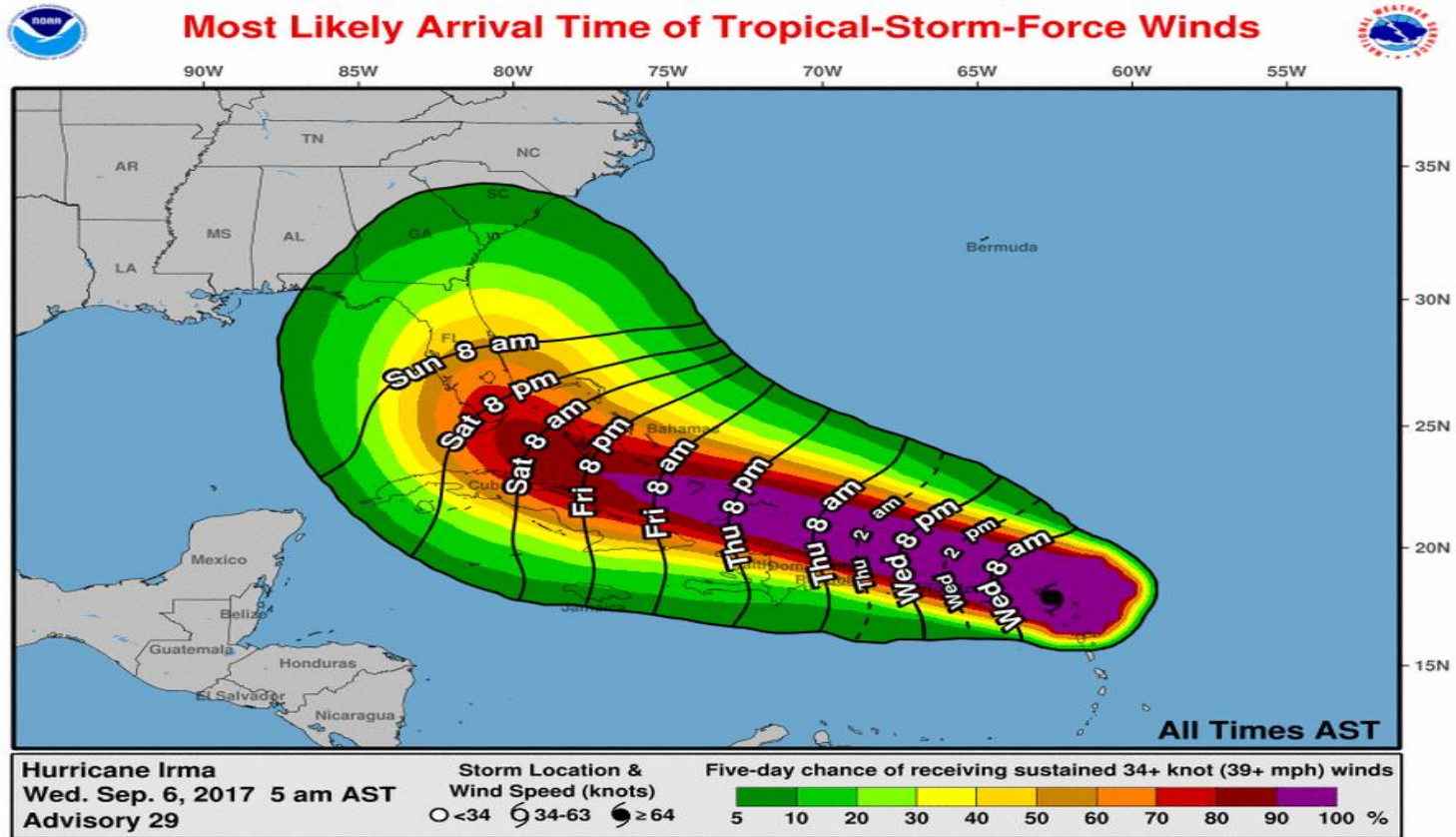


NHC Potential Tropical Cyclone (PTC)



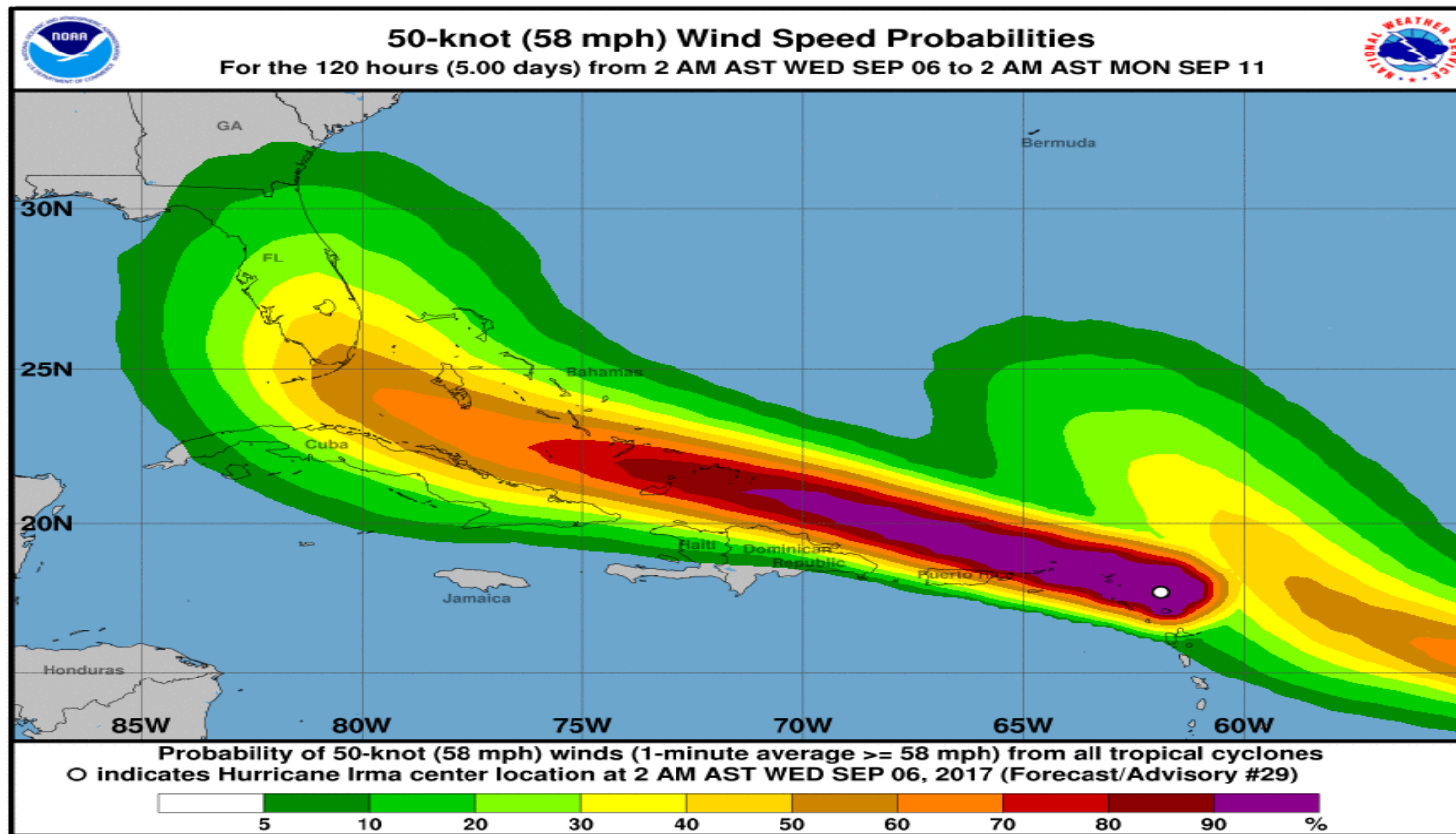


NHC Arrival Graphic



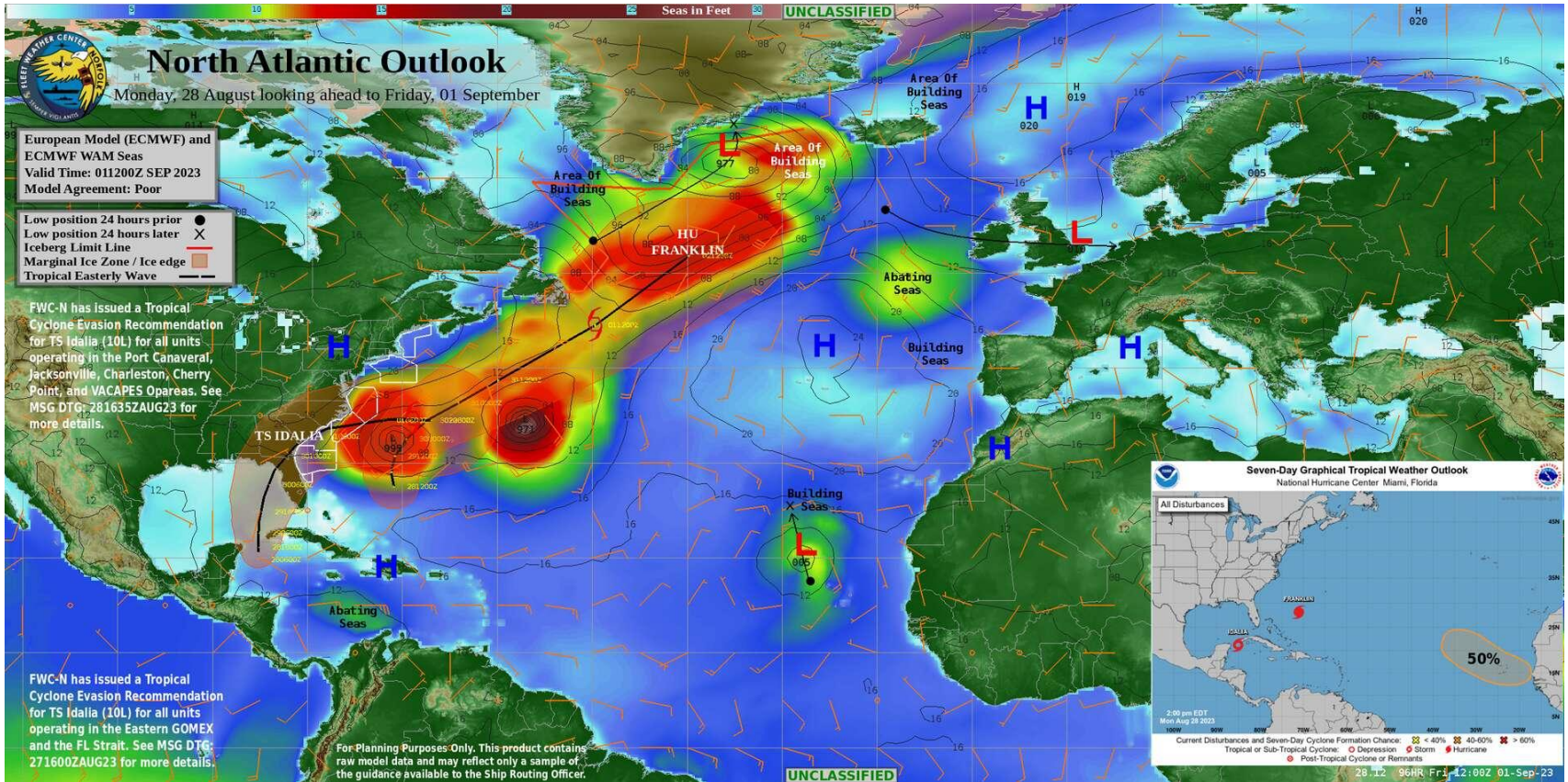


NHC Probability Graphic





FWC-N North Atlantic Outlook Product





FWC-N Websites

- Public Facing Page/Mobile Site
 - <http://www.metoc.navy.mil/fwcn/fwcn.html>
- CAC Enabled NIPR Website
 - <https://weather.navy.mil/NepocSupport/>
- SIPR Website
 - <https://weather.navy.smil.mil/NepocSupport/>
- Product Subscription Website
 - <https://weather.navy.mil/ProdSub/>



FWC-N Contact Information

Command Duty Officer

FWC-NRFK-CDO@US.NAVY.MIL

FWC-NORFOLK.CDO@NAVY.SMIL.MIL

PLA: FLTWEACEN NORFOLK VA

COM: 757-444-7583

Ship Routing Officer (OTSR)

FWC-NRFK-SRO@US.NAVY.MIL

[SRO.FWC.NRFK.FCT@NAVY.\(SMIL\).MIL](mailto:SRO.FWC.NRFK.FCT@NAVY.(SMIL).MIL)

[NORFOLK.OTSR@NAVY.\(SMIL\).MIL](mailto:NORFOLK.OTSR@NAVY.(SMIL).MIL)

COM: 757-444-4044

Tropical Operations Officer

[FWC-](mailto:FWC-NORFOLK_TROPS@US.NAVY.MIL)

NORFOLK_TROPS@US.NAVY.MIL

COM: 757-444-4967

Hurricane Duty Officer

COM: 757-444-8786

Resource Protection Duty Officer

FWC-NRFK-RPDO@US.NAVY.MIL

COM: 757-444-8692/2553



Questions/Feedback





Sortie of Afloat Units

Al Weidetz

Deputy Director Port Operations
NAVSTA Norfolk

alvin.l.weidetz2.civ@us.navy.mil



Fleet Sortie

- Afloat Units will sortie when >50 knot sustained winds or >8ft storm surge above mean low tide
 - Timing of Sortie is established to ensure safety and to help ships avoid 12 foot seas
- Sortie Conditions will be set by CTF 883 (Message Traffic)
 - **Sortie Condition Charlie** – Prepare to get underway in 48 hours.
 - **Sortie Condition Bravo** - Prepare to get underway in 24 hours.
 - **Sortie Condition Alpha** – Execute Sortie as ordered
- Usually, Sortie Charlie message designates when/where the Sortie Brief will be held
 - Ship reps attend Sortie brief held at Bldg W-313
 - Hosted by CTF80, FWC and NAVSTA Norfolk Port Ops



SORTIE Condition Charlie

- NAVFAC Oil Recovery shop remove all oil containment booms from the water.
- Port Operations deliver Heavy WX mooring lines as required.
- Ships execute the following actions:
 - **Remove brows/ramps and immediately switch to accommodation ladders.**
 - Prepare to Shift to ship's power or backup generator (not allowed on the pier) immediately and notify SSO Utilities Coordinator, Jason Wilson, via email (jason.m.wilson2.civ@us.navy.mil) or phone (757-341-0800) when ready to disconnect from S/P.
 - Safe haven ships will not remain on S/P. Ships remaining in a heavy WX moor shall operate on ships power or stand alone generator onboard for up to a week (or longer if the power grid is damaged).
 - Hold all trash and garbage, metal, wood, and cardboard onboard ship if receptacles are full.
 - Schedule HAZWASTE pickup with EV Services via phone (757-341-0460/0412)
 - Prepare to hold HAZWASTE on ship for a prolonged period.
 - **DO NOT LEAVE HAZWASTE UNATTENDED.**
 - Notify MARMC, shipyard, and/or maintenance contractors to remove all equipment, materials, vehicles, and generated trash. All piers must be clear of everything at SORTIE CONDITION BRAVO.
 - Parking/laydown areas for vehicles and trailers ISO ship maintenance must be identified and coordinated by the corresponding maintenance activity.
 - Electrical power for refrigerated trailers will not be available while under SORTIE conditions. Ships must make arrangement to prevent spoilage of all Class I and Class VIII supplies housed in such trailers.



SORTIE Condition Bravo

SORTIE CONDITION BRAVO

- Ships execute the following actions:
 - Shift to ship's power or backup generator (not allowed on the pier) immediately and notify SSO Utilities Coordinator, Jason Wilson, via email (jason.m.wilson2.civ@us.navy.mil) or phone (757-341-0800) when ready to disconnect from S/P.
 - DDGs and CGs hand-drop their S/P cables to the pier after PWD electricians complete de-energizing actions.
 - Continue to schedule HAZWASTE pickup with EV Services via phone (757-341-0460/0412) in accordance with the Ship Support Reference Guide.
 - Prepare to hold HAZWASTE on ship for a prolonged period.
 - **DO NOT LEAVE HAZWASTE UNATTENDED.**
 - Hold all trash and garbage, metal, wood, and cardboard onboard ship if receptacles are full.
 - These dumpsters will be removed before SORTIE CONDITION ALPHA and may not return for several days after storm has passed.
 - Police respective piers and parking lots for trash and gear adrift. Remove all vehicles and missile hazards. Ensure all ship's vehicles are moved well inland.
 - Prepare to disconnect from CHT, STEAM, and OW/WO. Safehaven ships may remain on CHT.



SORTIE Condition Alpha

- NWOC schedule CHT, STEAM, and OW/WO disconnects approximately one hour prior to each ship's departure and notify safe haven ships when STEAM and OW/WO disconnects will occur.
- NWOC remove all remaining trash dumpsters from piers.
- Ships execute the following actions:
 - BPT disconnect CHT, STEAM, and OW/WO approximately one hour prior to ship departure.
 - Sortie IAW Port OPS' sortie schedule.

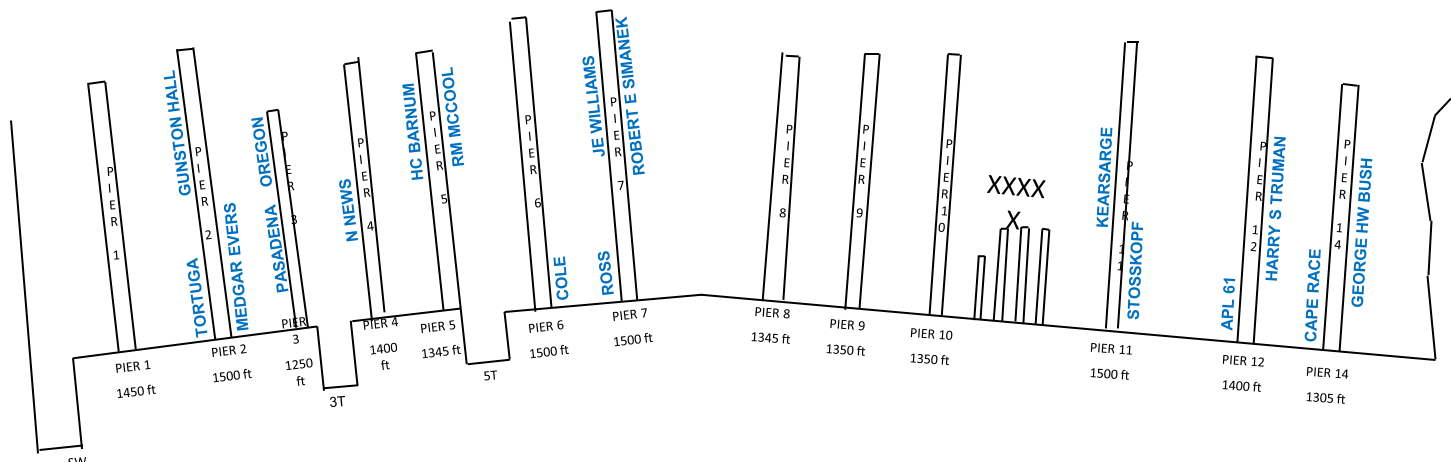
IF YOUR SHIP IS NOT READY TO GET UNDERWAY AT THE DESIGNATED +TIME, THE PILOT, TUGS, AND LINEHANDLERS WILL MOVE TO THE NEXT SHIP ON THE LIST AND YOUR SHIP WILL MOVE TO THE BOTTOM OF THE LIST.

SORTIE SECURED/RTP

- SSO restore ship services upon returning to port in order of CO seniority or IAW USFF priorities.
- Safe haven ships BPT connect and reenergize shore power when cleared to do so.



Pier Loading 23 MAR 26



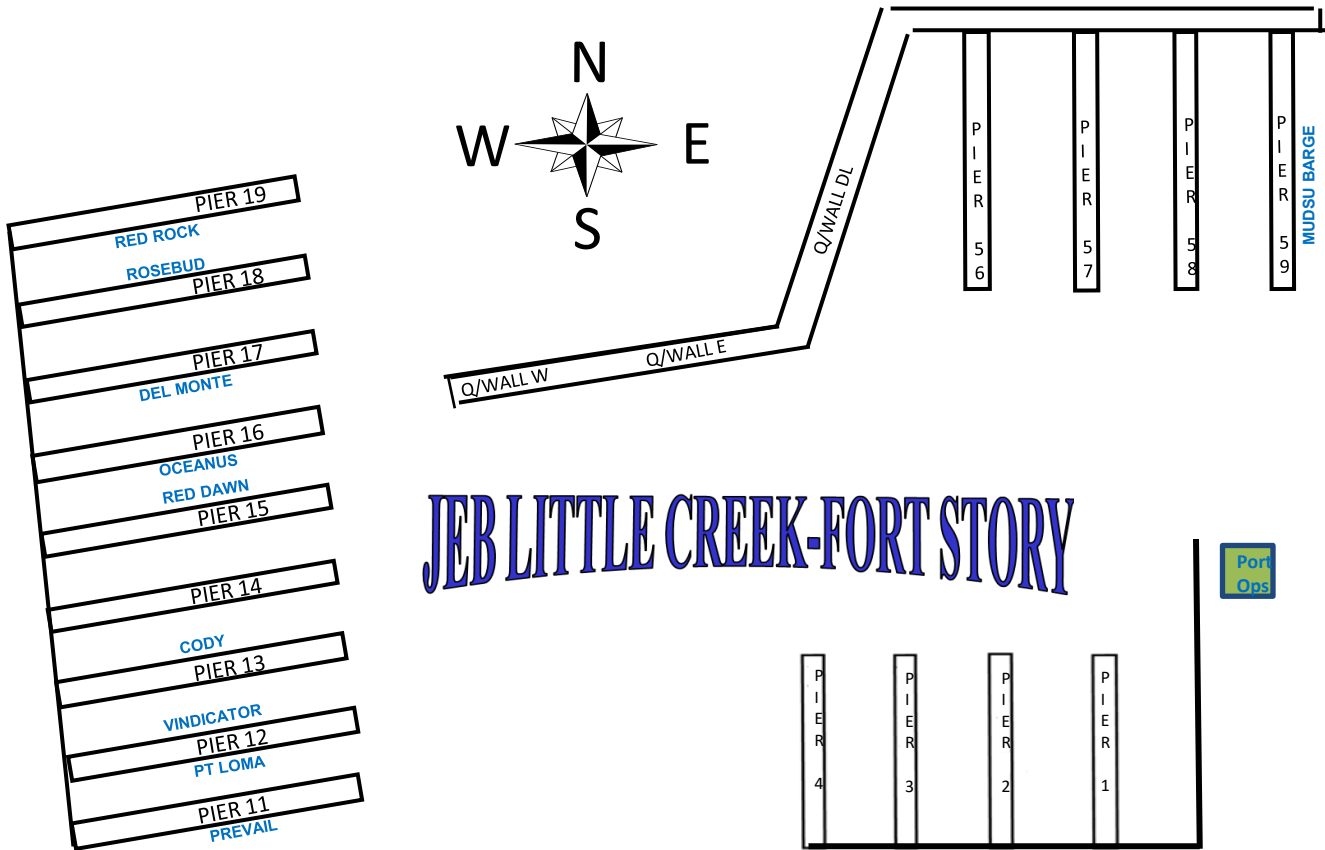
NAVSTA NORFOLK

3/26/2026

UNCLASSIFIED//FOUO



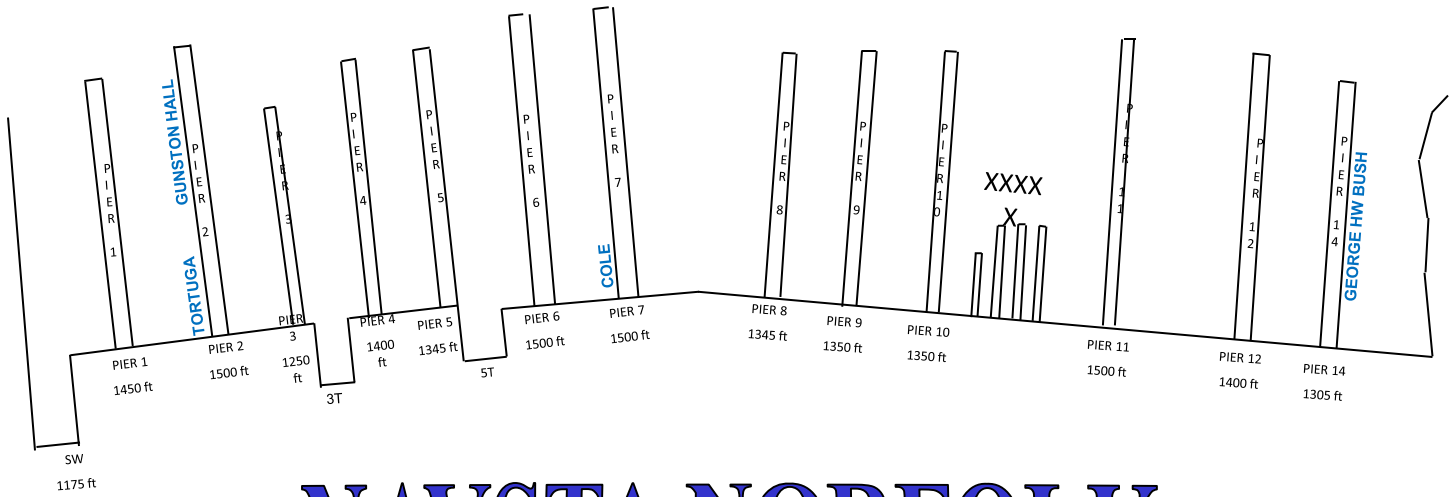
Pier Loading 23 MAR 26



UNCLASSIFIED//FOUO



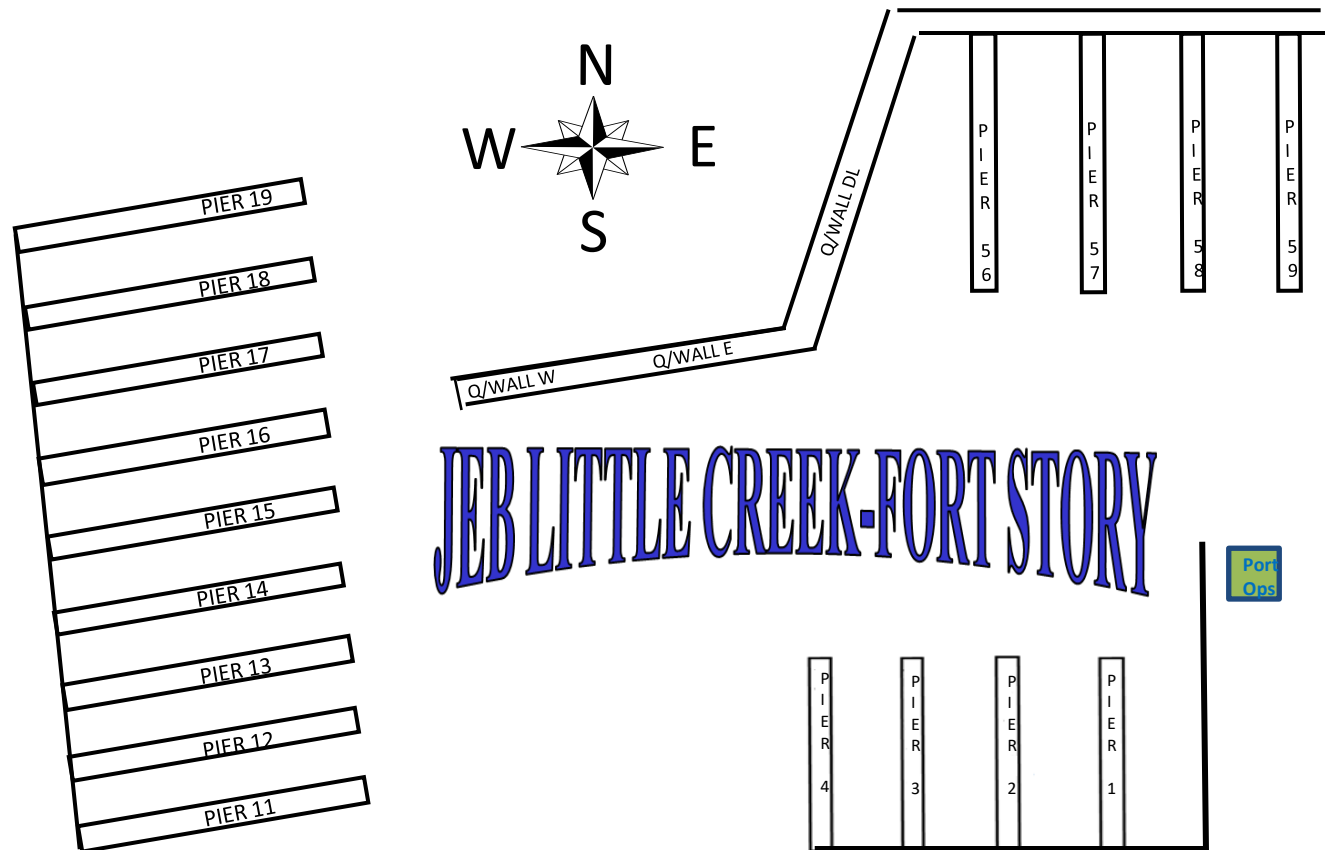
Safe Haven



NAVSTA NORFOLK



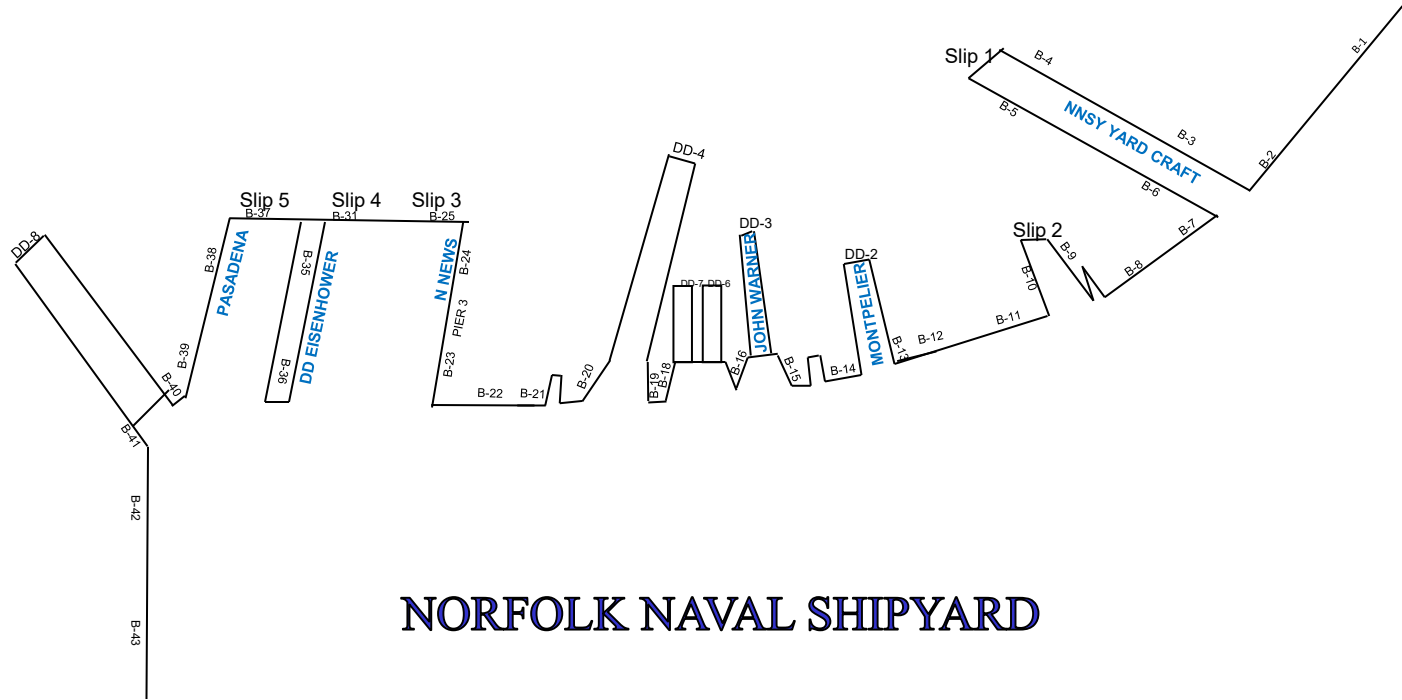
Safe Haven



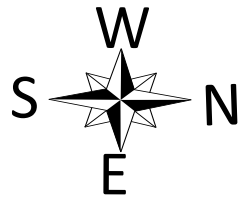
UNCLASSIFIED//FOUO



Safe Haven



NORFOLK NAVAL SHIPYARD





Safe Haven

+ 00:00	KEARSARGE (11-6)	4 TUGS
+ 00:00	MEDGAR EVERS (2-1)	3 TUGS
+ 00:20	FS STOSSKOPF (11-1)	2 TUGS
+ 00:20	HARVEY C BARNUM JR (5-6)	2 TUGS
+ 00:20	JAMES E WILLIAMS (7-6)	2 TUGS
+ 00:40	RICHARD M MCCOOL JR (5-5)	3 TUGS
+ 00:40	ROSS (7-2)	2 TUGS
+ 00:40	OREGON (3-6)(WARM-UP)	1 TUG
+ 00:40	CAPE RACE (14-2)	2 TUGS
+ 01:00	ROBERT E SIMANEK (7-5)	4 TUGS
+ 01:00	NEWPORT NEWS (4-4 to NNSY)	2 TUGS
+ 02:00	OREGON (3-6)	2 TUGS
+ 02:00	PASADENA (3-4 to NNSY)	2 TUGS



Aircraft Evacuation

LCDR Andrew Gregory
NAVSTA Norfolk Air Operations



Aircraft Wings / Squadron Sortie

✓ Reference: COMNAVAIRLANTINST 3141.1

- Aircraft Destructive Weather Evacuation Instruction
- Sample AESR included as an enclosure
- Identifies Responsible Authorities as:
 - Type Wing Commanders for squadrons under their administrative control
 - Air Test Evaluation Squadron One (VX-1) Commanding Officer for assigned aircraft.
- Destructive weather: Sustained winds of 50 knots or greater.
- When necessary, Responsible Authorities may determine that aircraft evacuation is mandatory due to hangar space restrictions, infrastructure limitations, or other related reasons. Any irreconcilable differences regarding evacuation will be resolved by CNAL.
- Once TCOR 3 is set, Wings should be ready to initiate aircraft evacuation.
- Once TCOR 2 is set, evacuation becomes mandatory.
- Squadrons shall attempt to evacuate all aircraft to one geographic location.



Aircraft Wings / Squadron Sortie

- Annually, prior to the end of HURREX, Responsible Authorities shall ensure the following are completed:
 - A Squadron Evacuation Control Officer (ECO) is appointed. Ensure respective Wing OPS and CNAL ECO are provided contact information.
 - Squadron ECO, in coordination with Wing OPS, has established preliminary liaison with a primary refuge base approved by CNAL. Verify proper support equipment, ground personnel, berthing, messing, supply, transportation and aircraft security issues are resolved.
 - Squadron ECO submit initial Aircraft Evacuation Status Report (AESR) to respective Wing OPS. Wing OPS will consolidate and forward to CNAL ECO.
 - Squadron ECO has coordinated with local METOC activity to receive timely notification of approaching destructive weather conditions.
 - Squadron ECO has contacted local Air Traffic Control (ATC) service to ensure expeditious clearance for evacuating aircraft.
- Once COR 4 is set or when requested by CNAL EDO, Squadron ECOs shall submit AESR information to respective Wing OPS **daily**. Wing OPS will establish NLT times to ensure necessary consolidation to CNAL ECO.



Navy-Marine Corps Relief Society

Rick O'Rawe
Director
Norfolk NMCRS

HURREX BRIEF 2026

WWW.NMCRS.ORG

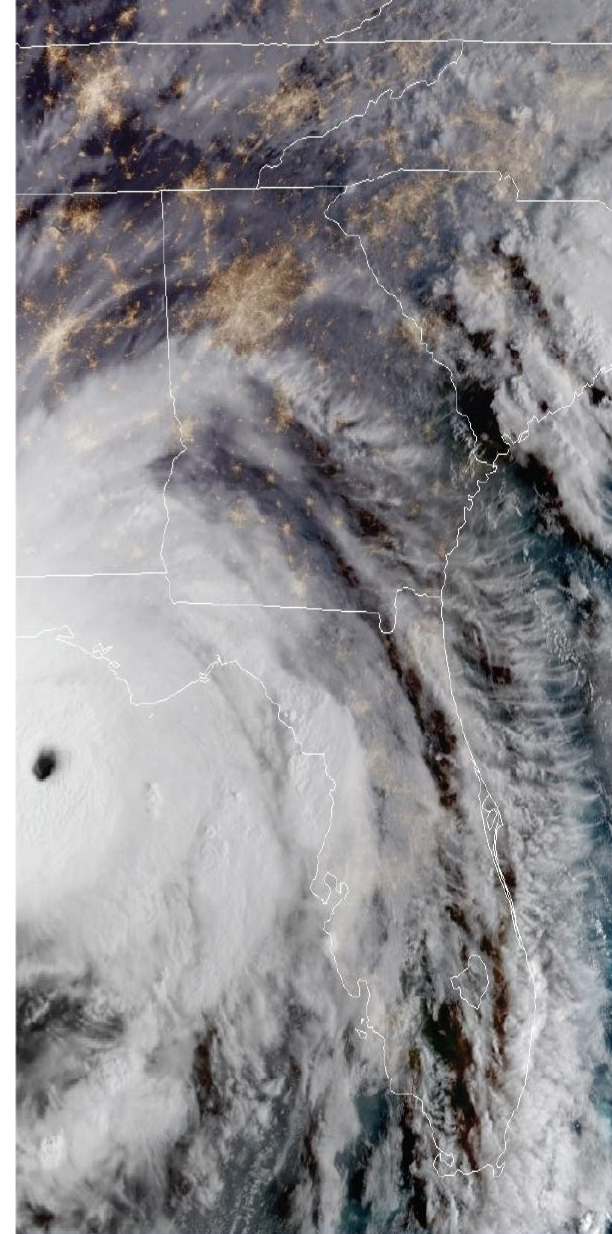


NAVY-MARINE CORPS
RELIEF SOCIETY®

MASS DISASTER EVACUATION

The NMCRS Mass Disaster/Evacuation Program is designed to assist clients to remove themselves and their families from harm's way, quickly and efficiently.

- This program is implemented in hurricane prone areas when advance warning is issued and local Emergency Management Agencies work in conjunction with Installation Leadership.
- Eligible clients are provided an **interest-free \$600 loan** intended to assist with gas, temporary lodging, food and essentials.
 - Spouses and/or dependent children are eligible for Disaster assistance without the advance concurrence of their sponsor. (i.e. sponsor sortied)
- When an evacuation is ordered by the command authority (Region/Base), government reimbursement can be expected. (Know Your Zone)
- NMCRS HQ will coordinate approval with other Military Aid Societies as required.



POST STORM ASSISTANCE

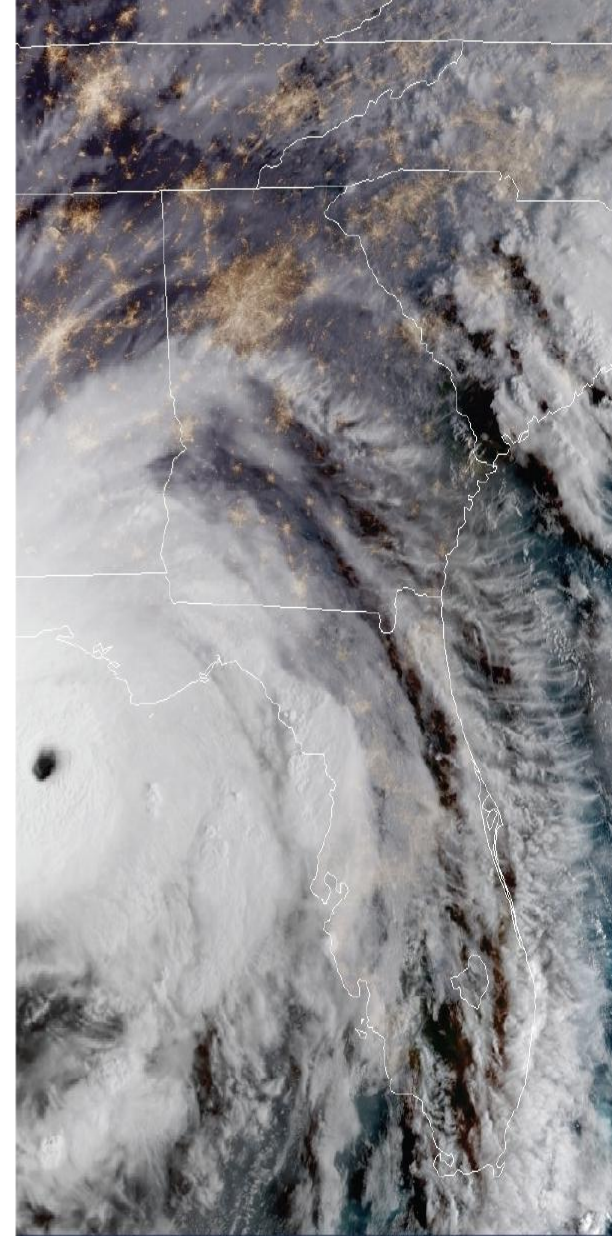
Once the storm has passed:

Clients may receive assistance with:

- Basic Living Expenses
- Insurance Deductibles
- Essential Home Repairs

Limitations

- Insurance deductible % of Home Value
- Wind/Hail Damage
- More than one estimate is required for replacements or repairs costing more than \$3000.



Hampton Roads Full-Service Offices

Norfolk

7928 14th St Bldg
SDA-344, Ste 238
Norfolk, VA 23505
757-322-1171

Rick O'Rawe
Director
757-322-1171

Rick.ORawe@nmcrs.org

Little Creek

JEBLC-FS
1481 D St, Ste 103
Virginia Beach, VA 23459
757-462-1596

Christina Murray
Director
757-462-4142

Christina.Murray@nmcrs.org

Oceana

Naval Air Station
1896 Laser Rd, Ste 130
Virginia Beach, VA 23460
757-433-3383

Tom Gaff
Director
757-433-3383

Thomas.Gaff@nmcrs.org

Portsmouth

620 John Paul Jones Circle
Naval Medical Center Bldg 3, Room 4.1-127
Portsmouth, VA 23708
757-953-5956

Thorunn Bitterman
Director
757-953-5956

Thorunn.Bitterman@nmcrs.org





Warnings and Watches

Storm Surge Watch: There is a possibility of life-threatening inundation from rising water moving inland from the shoreline somewhere within the specified area, generally within **48 hours**.

Storm Surge Warning: There is a danger of life-threatening inundation from rising water moving inland from the shoreline somewhere within the specified area, generally within **36 hours**. *If you are under a storm surge warning, check for evacuation orders from your local officials.*

Tropical Storm Watch: Tropical storm conditions (**sustained winds of 39 to 73 mph**) are possible within the specified area within 48 hours.

Tropical Storm Warning: Tropical storm conditions (**sustained winds of 39 to 73 mph**) are expected within your area within **36 hours**.



Warnings and Watches

Hurricane Watch: Hurricane conditions (sustained winds of **74 mph** or greater) are possible within your area. Because it may not be safe to prepare for a hurricane once winds reach tropical storm force, The National Hurricane Center issues hurricane watches 48 hours before it anticipates tropical storm-force winds.

Hurricane Warning: Hurricane conditions (sustained winds of **74 mph** or greater) are expected somewhere within the specified area. NHC issues a hurricane warning 36 hours in advance of tropical storm-force winds to give you time to complete your preparations. All preparations should be complete. Evacuate immediately if so ordered.

Extreme Wind Warning: Extreme sustained winds of a major hurricane (115 mph or greater), usually associated with the eyewall, are expected to begin within an hour. Take immediate shelter in the interior portion of a well-built structure.



Know Your Zone

<https://www.vaemergency.gov/know-your-zone>



Virginia Department of Emergency Management

An official website of the Commonwealth of Virginia [Here's how you know](#) ▾

Find a Commonwealth Resource



Virginia Department of
Emergency Management

[HOME](#) [PREPARE](#) [AGENCY FUNCTIONS](#) ▾ [NEWS](#) [DONATE](#) [CONTACT](#)

Emergency Support Team (VEST) Status Green, Steady State / Routine Operations

SEARCH ...

Know Your Zone

Be ready when disaster strikes.

[Prepare](#) [Know Your Zone](#) [Stay Informed](#) [Build a Kit](#) [Make a Plan](#) [Individuals with Disabilities](#) [Partners](#) [Calendar](#)

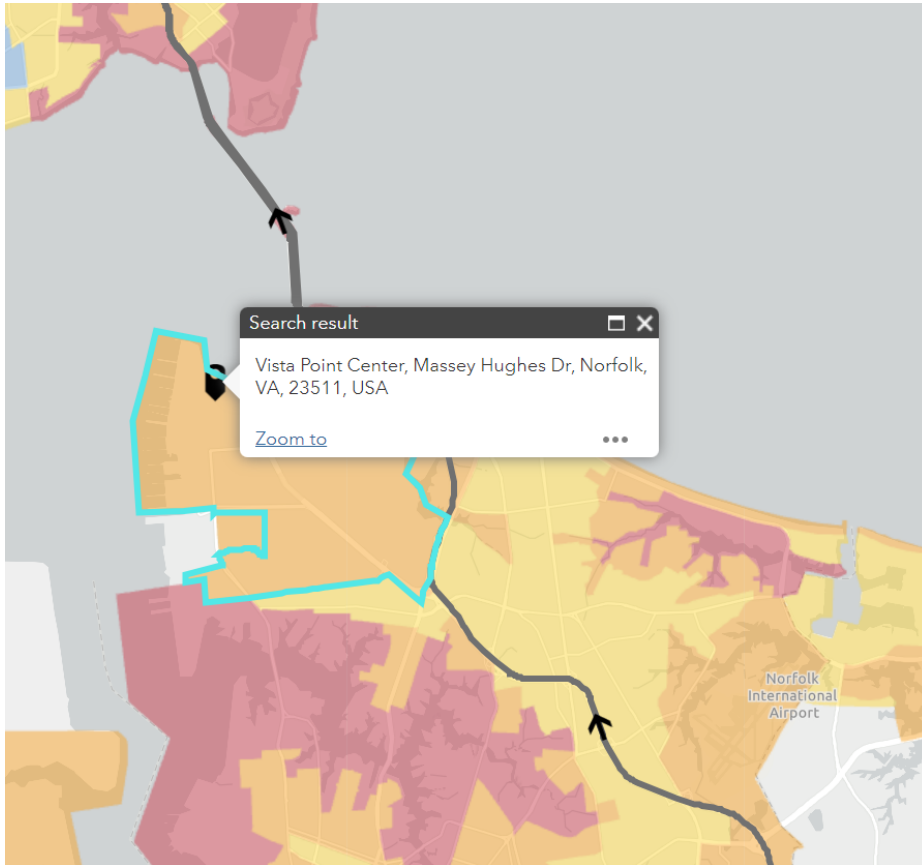
Find Your Zone

Use our mobile-friendly interactive map to find your evacuation zone.

[Go to Map](#)





Know Your Zone



Find Your Zone



Search for an address to learn about **Virginia Hurricane Evacuation Zones** by entering an address in the search box, using the **my location** button or clicking in the map.

Vista Point Center, Massey Hugl X  

< Virginia Hurricane Evacuation Zones (2020 Update)

You are in Evacuation Zone B
in Norfolk, VA

Current evacuation information regarding this Navy Installation has been put out via multiple installation to tenant command communication channels (e.g., Athoc, Giant Voice, email, etc).

[Click here](#) for more information.



Evacuations – Have a Plan in Place

If an evacuation is possible:

- Make hotel reservations early
 - Ensure they can be cancelled if not needed
- Gather important papers and Evacuation Kit
- Pets
 - Boarding
 - Pet Friendly Hotels
 - www.petswelcome.com
 - Shot Records
 - Pet carrier (pets may become afraid)
 - Put pets name on collar with contact info
- Prescription Meds (get 30 days if possible)
- Cash (No power = No ATM)
- Full gas tank in car (No power = no gas)
- Maps of destination and evacuation route
- Important phone numbers and websites
- Cell phone chargers
- Bottle Water
- Non-perishable food





Build a Kit

Kit Storage Locations:

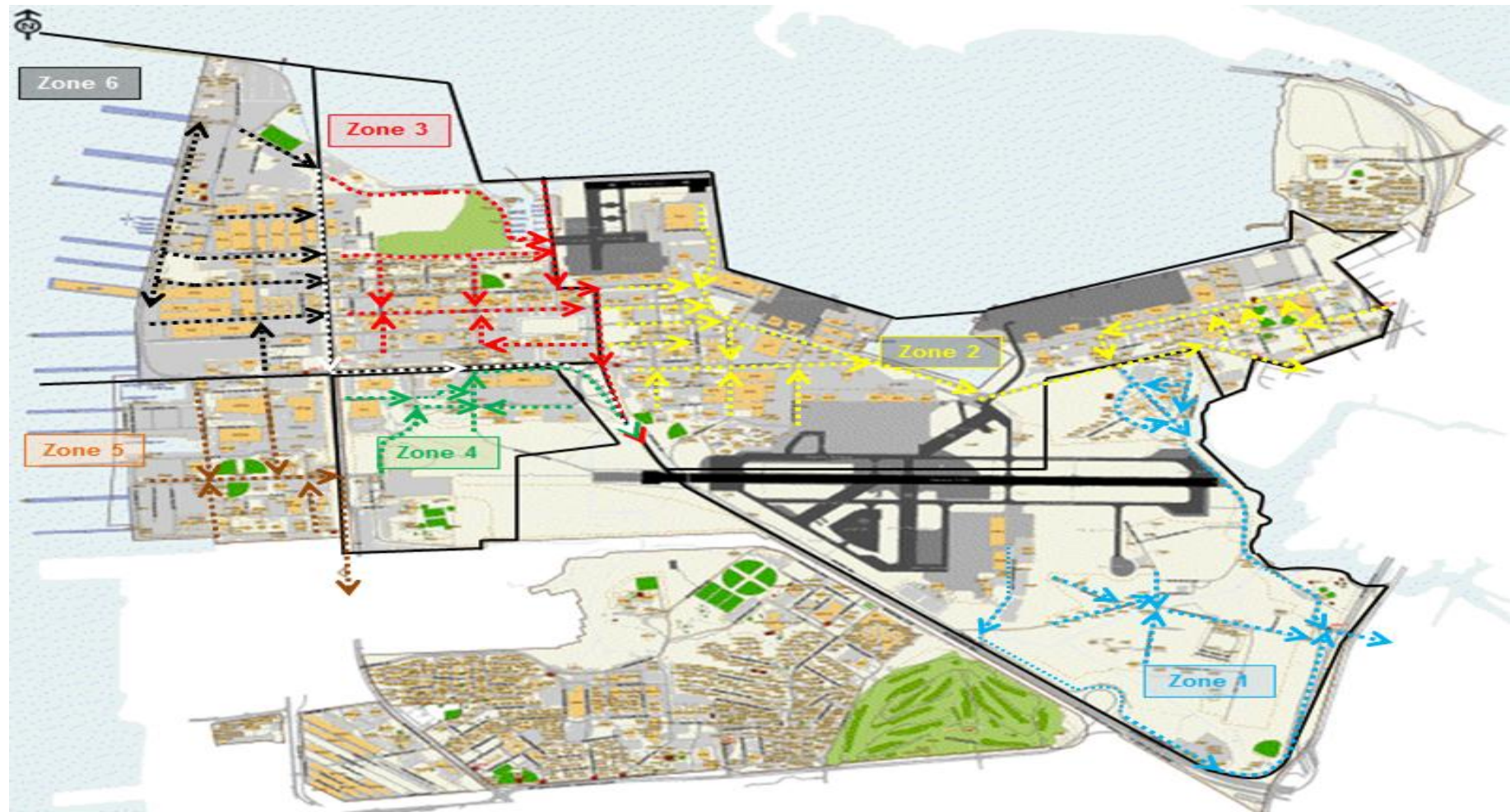
Since you do not know where you will be when an emergency occurs, prepare supplies for home, work and cars.

- **Home:** Keep this kit in a designated place and have it ready in case you have to leave your home quickly. Make sure all family members know where the kit is kept.
- **Work:** Be prepared to shelter at work for at least 24 hours. Your work kit should include food, water and other necessities like medicines, as well as comfortable walking shoes, stored in a “grab and go” case.
- **Car:** In case you are stranded, keep a kit of emergency supplies [in your car.](#)





Base Evacuation Routes





Norfolk Alert

NORFOLKALERT

Get Connected. Stay Informed.

EMAIL • PHONE • TEXT

Get Alerts & Community
News specific to *your*
neighborhood

Register at
Norfolk.Gov/Alert OR
Everbridge Smartphone App



THE CITY OF
NORFOLK



Norfolk Alert



Get Connected. Stay Informed.

EMAIL • PHONE • TEXT

Welcome Micheal67 [Logout](#)

[? Help & Answers](#)

My Subscriptions

Checking or unchecking a subscription will also apply that change to any subgroups within that subscription.

Alert Subscriptions

Public Safety Alerts

Public Safety Departments (3)

Fire-Rescue

Police

Emergency Operations Center-911

Weather

Wind (1)

Flood (5)

Winter (9)

Non-Precipitation (2)

Tsunami (2)

Tropical (7)

Severe (4)



Virginia Beach Alert



Emergency Management

Emergency Management

📞 (757) 385-1077

✉️ vboem@vb.gov

Virginia Relay TTY

📞 711

Emergency Management promotes a comprehensive emergency management program to mitigate the community's impacts from manmade, natural or technological disasters and potential catastrophic incidents by utilizing mitigation, preparedness, response and recovery strategies.

The City's emergency management system is outlined in the State Code and within Local Ordinance.



Emergency Preparedness

The public's health and safety are a top priority for City officials, but the City can't do it alone.

[Be Prepared >](#)



Hurricane Hazards Fact Sheet

Hurricanes are violent storms which can bring heavy rain, intense winds, storm surges, floods, coastal erosion, landslides and tornadoes.

[Get The Facts >](#)



Sign Up for VBAAlert

The City of Virginia Beach uses VBAAlert to send notifications to residents and visitors when there is a public safety incident.

[Sign Up Today >](#)



NFAAS APP

The NFAAS app allows users to:

- Report accounting status
- Update contact/location information
- Manage your personal contacts
- Use checklists to help prepare for an emergency
- Use GPS and get turn-by-turn directions to the closest Navy installation
- Learn what to do before, during and after an emergency or disaster
- Watch videos showing you how to update your NFAAS information and why
- App has been sluggish during past accountability exercises





Personnel Accountability (PA)

- For a disaster that affects our area, an “Order to Account” NAVADMIN message will be released which identifies a Geographic Area of Interest (GAOI)
 - Order to Account will most likely during second week of exercise
 - May be by state, county, city or zip code
 - Will state time limit for all to report accountability (usually 72 hours)
- Personnel in these areas will be required to muster or account for themselves and their family members
- NFAAS Website <https://www.navyfamily.navy.mil>
 - Account for sponsor AND all family members effected, and give location
 - Fill out needs survey if applicable
- CO Representative (COR) should have a PA Fly Away Kit
 - PA Instruction, Command rosters, PA POCs
 - Manual muster procedures (Command POC contact info)
 - **In the event NFAAS is down**



Needs Assessment



NFAAS NAVY FAMILY ACCOUNTABILITY and ASSESSMENT SYSTEM

For Official Use Only

- Logout
- Help

Home

My Info

Assessment

Reference Library

Survey

Introduction / FAQ

Print Blank Survey

Step 2 of 3: Assessment Summary

Not Affected	Not Sure	Need Assistance	(Check all that apply. Please choose Not Affected if none apply!)
<input checked="" type="radio"/>	<input type="radio"/>	<input type="radio"/>	TRANSPORTATION TO ONWARD DESTINATION (Do you or your family need help getting to Safe Haven or Permanent Duty Station (PDS)?)
<input type="radio"/>	<input type="radio"/>	<input checked="" type="radio"/>	TEMPORARY HOUSING (Do you need help with temporary housing?) <ul style="list-style-type: none"> <input type="checkbox"/> Need urgent help finding temporary housing more <input checked="" type="checkbox"/> Need help finding more adequate temporary housing more (for example, now living in a group shelter, with friends, etc.) <input type="checkbox"/> Have adequate short-term temporary housing, but need help finding long-term temporary housing until my home can be rebuilt or repaired <input type="checkbox"/> Need information only Comments: <i>(must check a box above first)</i> <input type="text"/> <i>For additional comments use the bottom of the form.</i>
<input checked="" type="radio"/>	<input type="radio"/>	<input type="radio"/>	PERMANENT HOUSING (Do you need help with permanent housing?)
<input checked="" type="radio"/>	<input type="radio"/>	<input type="radio"/>	FINANCIAL ASSISTANCE (Do you need help with personal finances?)
<input checked="" type="radio"/>	<input type="radio"/>	<input type="radio"/>	SCHOOL (Do you need information on schools?)



Questions

